

Dog-walking tote bag instructions



Materials

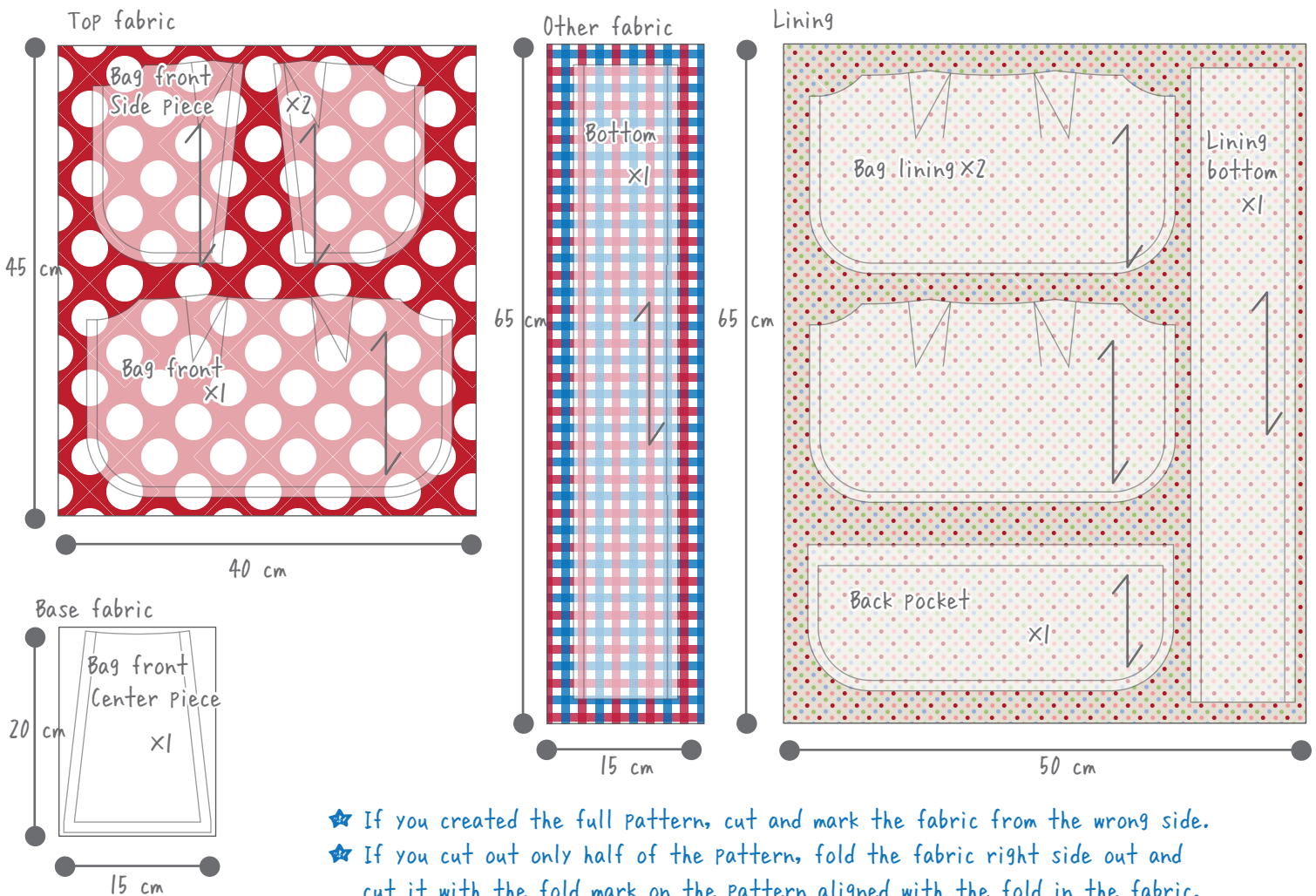
- Top fabric 45 cm × 40 cm ×1
- Other fabric 65 cm × 15 cm ×1
- Base fabric 20 cm × 15 cm ×1
- Lining 65 cm × 50 cm ×1
- Trim tape 25 mm wide, 1.5 m long
- Twill tape 20 mm wide, 0.1 m long
- 6 mm elastic bands, 0.4 m long
- Magnetic snap (18 mm) ×1
- Decorative ribbon As desired
- Fabric printing paper, half of A4 (iron-on transfer type)

★ We recommend a medium-weight fabric such as canvas for the tote bag!

Finished size

Height: 18 cm, Width: 33 cm, Bottom width: 8 cm

Cutting guide



- ★ If you created the full pattern, cut and mark the fabric from the wrong side.
- ★ If you cut out only half of the pattern, fold the fabric right side out and cut it with the fold mark on the pattern aligned with the fold in the fabric. When marking the fabric using transfer paper, etc., mark the wrong side.
- ★ Normally, pieces are sewn with their right sides together. The pieces can be sewn together smoothly if the markings are on the wrong side of the fabric.

Let's print on fabric!

Sew using your favorite photo!

2

We will use a smartphone or digital camera and a Wi-Fi inkjet printer to print on fabric.

① Load special fabric printing paper into the printer, and then select and print your favorite image.

- ★ The printer specifications may differ depending on the country where it was purchased.

Note

- For details on printing, refer to the instructions for your printer.
- For greater originality, crop or enhance the image using the smartphone's camera app. You can also use the image as it is!
- Use commercially available fabric printing paper. There are two types of fabric printing paper: the iron-on transfer type and the sew-on type. Use the iron-on transfer type for this project.

Fig. ①



Edit the image using the smartphone's camera app. You can also use the image as it is!

Fabric Printing Paper



Load fabric printing paper into the printer.



From the printer, select the image, paper and layout, and then print.

Printing is finished!

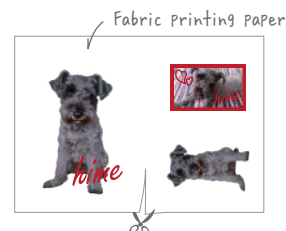


② Iron the transfer paper onto the base fabric for the center piece, and then cut the fabric to the size of the center piece.

Note

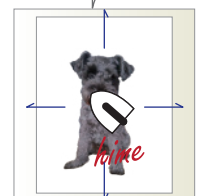
- If the printed material has a backing attached, peel it off before ironing.
- Iron the transfer paper from the center to the outside, making sure that no air is trapped.
- Since the fabric printing paper is thin and unsuitable as backing, choose base fabric that matches the materials to be used.

Fig. ②



Cut out roughly.

Base material



Iron onto base fabric.



Cut out the center piece.

Your smartphone or digital camera image can also be imported onto your computer and printed!

If you have smartphone and Wi-Fi printer, try out this project by following the instructions. Create this project according to your setup. 🎵

Instructions

* Step 1

Make the pocket.

- ① Turn the pocket opening to the inside twice and stitch it, feed elastic through the casing until it is 28 cm long.

Note

- Sew reverse stitches at the beginning and end of stitching.

- ② Sew the pocket to the lining. Align the center of the lining and the pocket, and then sew together.

Note

- Sew reverse stitches at the beginning and end of stitching.

* Step 2

Make the bag.

- ① Sew together the front side of the bag front. Fold the seam allowances toward the center piece. Sew together the pieces for the back side.

Note

- Sew reverse stitches at the beginning and end of stitching.

- ② Fold tucks in the bag fronts and bag linings, and then baste them.

Note

- Sew reverse stitches at the beginning and end of stitching.

- ③ With right sides together, sew the bag fronts to the bottom. Fold the seam allowances toward the bag fronts.

Note

- Sew reverse stitches at the beginning and end of stitching.
- Baste tucks and sew the bottom on the bag lining in the same way.

Fig. ①

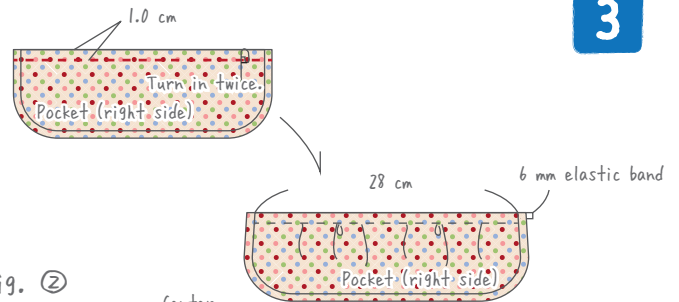


Fig. ②

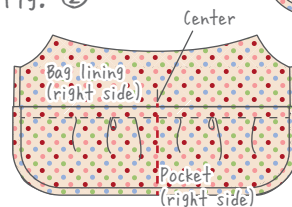


Fig. ①

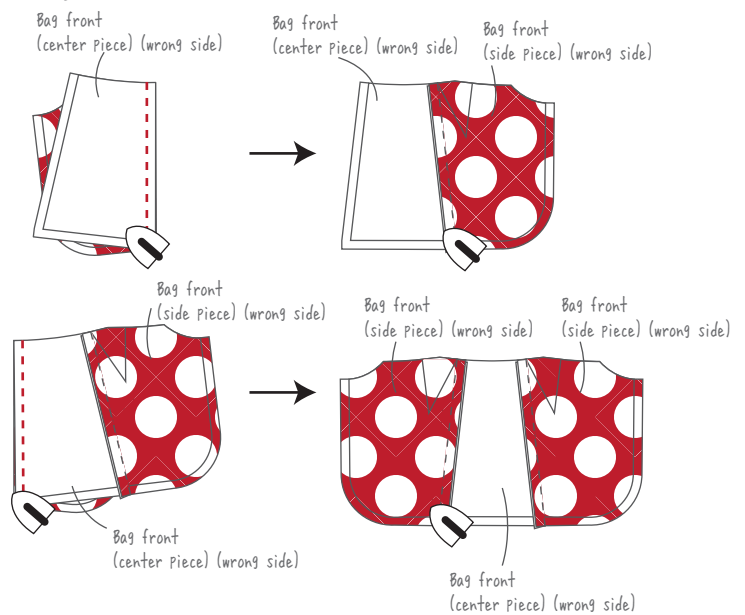
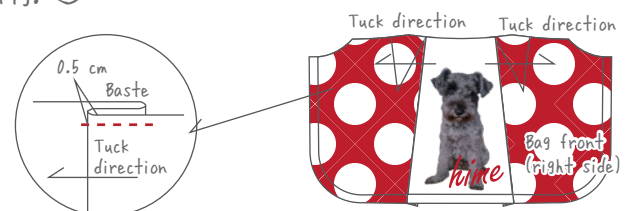
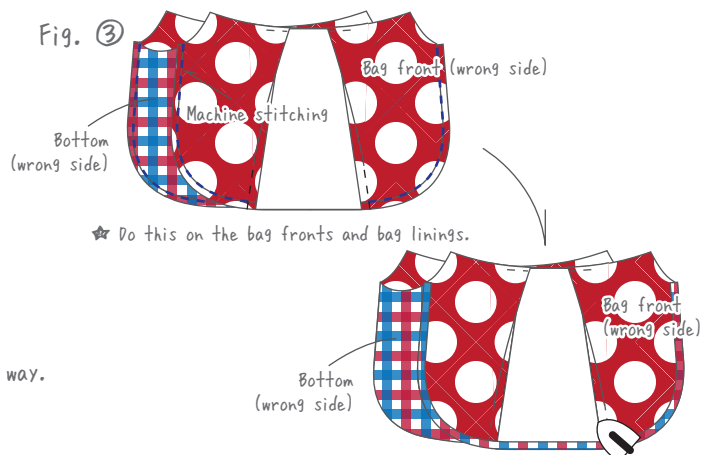


Fig. ②



- ★ Do this on all four pieces: bag fronts and front and back bag linings.

Fig. ③



- ★ Do this on the bag fronts and bag linings.

- ★ Do this on the bag fronts and bag linings.

* Step 3

Attach the magnetic snap.

- ① Attach the magnetic snap to the bag lining.

Note

- There are two types of magnetic snaps: the push-in type and the sew-on type.
- Use the desired type, but affix stabilizer when using the push-in type.

- ② Place the bag lining into the bag front with their right sides out, and then sew staystitching so that the seam allowances do not become misaligned.

Note

- Sew reverse stitches at the beginning and end of stitching.

Fig. ①

★ Affix stabilizer when attaching the magnetic snap.



4

Fig. ②



* Step 4

Make the handles.

- ① Cut the trim tape to the specified lengths.
Bring together the two ends of the tape for the handles, and then sew them together with stitching in a zigzag pattern.
Sew twill tape over the seam to hide it.
For finishing the bag opening . . . 20 cm long, X2
For the handles . . . 104 cm long, X1

Note

- Sew reverse stitches at the beginning and end of stitching.

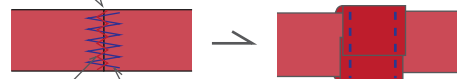
- ② Finish the bag opening.
Fold the trim tape in half, cover the edge of the opening, and then sew in place.
After sewing, cut off any excess tape.

Note

- Sew reverse stitches at the beginning and end of stitching.

Fig. ①

Tightly bring together the ends of the trim tape.



Zigzag stitching

Sew straight stitches in a zigzag pattern.

Wrap with twill tape to hide the seam, and then stitch both sides to secure it.

Fig. ②

Fold the trim tape in half.



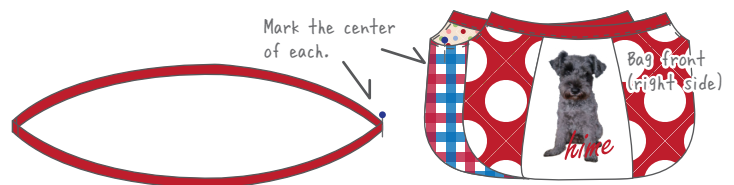
* Step 5

Attach the handles.

- ① Fold the looped tape in half at the seam, and then mark the opposite end (center of tape) with a pin.

Fig. ①

Mark the center of each.



② Determine the starting point by aligning the seam of the looped trim tape with the center on one side of the bag bottom, and then fold the trim tape in half lengthwise and secure it with pins.

③ Align the pin marking the center of the trim tape with the center on the other side of the bag bottom, and then fold the trim tape in half lengthwise and secure it with pins in the same way.

④ Fold the handle section in half, and then stitch along the edge.

Note

- Sew reverse stitches at the beginning and end of stitching.

Fig. ②

Fold the tape in half, cover the seam allowance, and then secure with pins.



5

Fig. ③

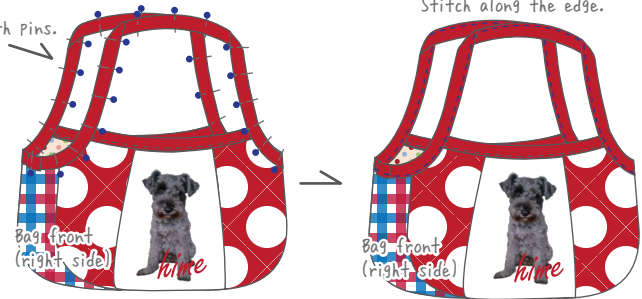
Align with the center on the opposite side, and secure with pins.



Fig. ④

Fold the handle section in half, and secure it with pins.

Stitch along the edge.



*** Finishing**

① Attach ribbon, etc., for decoration, if desired.

Note

- Attach fun decorations to coordinate with your favorite photo.
- Be creative by adding embroidery or ScanNCut designs!

② Touch up with an iron, and it is finished!

Fig. ①

Attach the ribbon.



Fig. ②



The dog-walking tote bag ☆ printed with a photo ♪ is finished!!