

DCP-L3560CDW

brother
at your side

BEYOND COLOUR IN PRINT

Colour Solutions for Professional Printing



Up to 26ppm
(mono/colour)



Auto 2-Sided
Printing



3.5" Customisable
Touch Screen LCD



Security
Functions



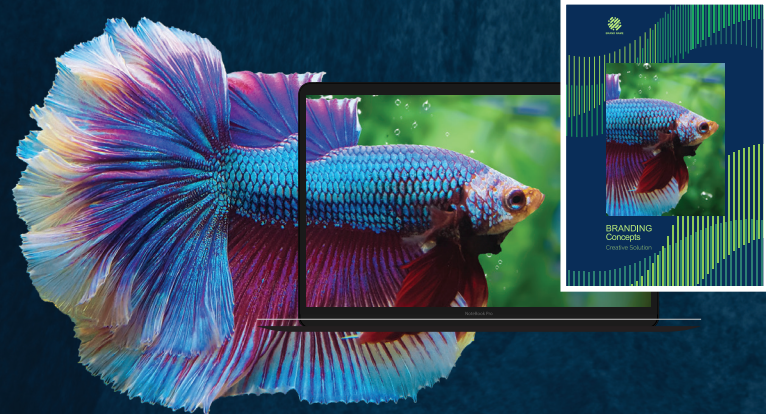
Wireless
Connectivity



Mobile Printing
& Scanning

Daily documents expressed in incredible hues. Present printouts with vivid accuracy in full detail through Brother's new series of single and multi-functional laser printers. Designed for the modern office and its workflow, each model in the line-up is crafted with rich utilities and productivity functions that enhance daily operations. Experience colour that is true to life, just as your vision sees it.

Colours That Go Beyond



01

True to Life

Professional printouts that are vibrantly accurate. Utilising Brother's leading LED technology, colours produced by the DCP-L3560CDW are crisp and sharp, with gradients being smooth and natural. Reduce the guesswork and excessive reprints as documents produced are as accurate as how you calibrate them on screen.

02

Meet High Volume Printing Needs

Print so much more at a fraction of the cost for greater value overall. With Brother's High Yield Toners, the new DCP-L3560CDW offers incredibly efficient print usage rates that reduce the need for frequent replacements. Print costs are averaged out over a longer period of time as well, keeping Total Cost of Ownership (TCO) low.

* Approximate cartridge yield is declared in accordance with ISO/IEC 19798.

CARTRIDGES YIELD:

3,000 PAGES on black* prints	2,300 PAGES on colour* prints
---	--

03

Fast Prints on Demand

Speed when you need it. Both colour and monochromatic documents print at impressive output speeds on various supported types of media, such as up to 26ppm for A4. Have documents ready in hand on time, as productivity is improved thanks to less time spent waiting.



A4
Up to 26ppm
(mono/colour)

Cost & Resource Saving Prints



Auto 2-sided
Printing

06

Up To 50% Less Paper Waste

Up to 50% less paper waste is created while creating documents thanks to automatic 2-sided printing, saving costs in the long run.

Small & Silent

04

Quiet Operations

Print documents quietly with Quiet Mode. Ready Mode can also be used to ensure that it runs silently on while standby.

05

Compact-Sized for Flexibility

The Multi-Function Centre can be integrated into workflows with ease and flexibility due to its compact size, helping you to improve productivity in any workspace.

Secure Your Documents With Fuss-Free Connectivity



07

Enhanced Sharing Accessibility

Built-in Wi-Fi, Wireless LAN (2.4GHz/5GHz) and Gigabit Ethernet on the DCP-L3560CDW allow for effortless usage sharing of your machine over the same network.



08

Connectivity for Convenience

Print and scan your documents from and to mobile devices with ease by using the Brother Mobile Connect application*. Applications like Brother Cloud Apps* and WebConnect* also assist in providing seamless scanning and printing jobs.

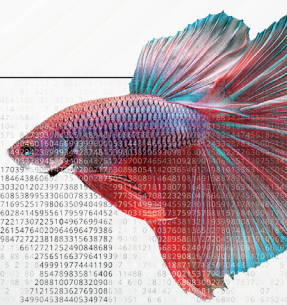
*The printer and the application must be on the same network to function properly.

09

Secure Your Important Documents

The Secure Print function ensures documents are not copied or read by unauthorised users without the required four-digit PIN. Unretrieved documents are automatically deleted, saving costs in an environmentally friendly way.

Security
Function





DCP-L3560CDW

Key Functions	Print, Scan and Copy
Description	Colour LED Multi-Function Centre with Wireless, Gigabit Ethernet Connectivity, 2-Sided Printing and 3.5" Touch Screen Panel
Print Speed (A4/Letter)	Up to 26/27 ppm
Print Resolution	600 x 600 dpi, 2,400 dpi (600 x 2,400) quality
First Print Out Time (Ready)	Less than 13.5/13.5 secs (Mono/Colour)
2-Sided Feature	Automatic 2-Sided Printing
COPY FUNCTIONS	
Copy Speed (A4/Letter)	Up to 26/27 cpm
Copy Resolution	600 x 600 dpi
Reduction / Enlargement Ratio	25% - 400% in 1% increments
Copy Features	N in 1
SCAN FUNCTION	
Scan Speed (Mono/Colour)¹	27/21 ipm (A4) 29/22 ipm (LTR)
Scan Technology	CIS
Resolution (Optical)	Max 1,200 x 1,200 dpi
Resolution (Interpolated)	Max 19,200 x 19,200 dpi
Scan To Functions	Sharepoint, E-mail, Image, OCR, File, FTP, Network (Windows only)
CONNECTIVITY/NETWORKING	
Interface	USB 2.0, Gigabit Ethernet (10Base-T/100Base-TX/1000Base-T), Wi-Fi Direct, Wireless Lan (2.4GHz/5.0GHz)
Mobile Solutions	AirPrint, Mopria and Mobile Connect App
Desktop Solutions	Brother iPrint&Scan
Brother's Cloud Apps	Yes
WebConnect	Yes
PAPER HANDLING	
Input Tray (Standard)	250 sheets
Multi-purpose Tray / Manual Slot	1 sheet
Output Tray (Face Down)	150 sheets Face Down (80g/m ²) 1 sheet Face-Up (straight paper path)
Automatic Document Feeder (ADF)	50 sheets
Media Weights (Standard Tray/MPTray)	60 to 163g/m ² (16 to 43lb)
Media Size (Standard Tray)	A4, Letter, Legal, Mexican Legal, India Legal, Executive, A5, A5 Long Edge, A6, JIS B5, A4 Short (270mm), Folio, 16K (195 x 270mm)
OTHERS	
Processor Speed	MAIN: Cortex-A53 800MHz Sub: ARM946 133MHz
Memory	512MB
Display	3.5" TFT ColourLCD
OS Compability	Windows: Win10, 11 Server 2012 / 2012R2 / 2016 / 2019 / 2022 Linux: CUPS, LPD/LPRng (x86/x64 environment)
Utilities & Solutions	BRAdmin Light*, BRAdmin Professional 4*, Web Based Management
Security Features	Setting Lock, Secure Function Lock, Secure Print, Active Directory, LDAP
Power Consumption (Printing/Sleep)	Printing: Average: Approx. 560W Sleep mode : Average: Approx. 10W
Power Source	220-240 V AC 50/60Hz
Noise Level (Printing)	LpAm = 47 dB(A)
SUPPLIES	
Standard-Yield Toner (TN269)¹	BK: Approx. 1,500 pages CMY: Approx. 1,200 pages
High-Yield Toner (TN269XL)¹	BK: Approx. 3,000 pages CMY: Approx. 2,300 pages
Drum (DR269CL)	Approx. 20,000 pages (1page/job) Approx. 30,000 pages (3page/job)
DIMENSIONS & WEIGHT	
Dimension (W x D x H)	410 x 444 x 401 mm
Weight w/o Carton, w/ toner/drum	ASA: 20.2 kg IND: 20.1 kg

* For Window by download only

¹ In accordance with ISO/IEC 17991

¹¹ In accordance with ISO/IEC 19798



Working with you for a better environment
www.brotherearth.com



One-stop centre for free downloadable templates



Brother strongly recommends the use of genuine Brother consumable products only. Benefits include better quality print, greater yields per consumable, protection of your machine from damages and achievement of optimum performance. As a precaution, please note that your machine warranty may not cover any damages arising from the use of non-genuine consumables.

www.brother.com.sg

Microsoft, Windows, the Windows logo and/or other Microsoft products referenced herein are either registered trademarks of Microsoft Corporation in the U.S. and/or other countries. Brother and its logo are trademarks of Brother Industries Ltd., Japan. All specifications are subject to change without notice. All registered trademarks referenced herein are the property of their respective companies. Brother International Corporation, Japan.